

OVERALL RANKING: (TOTAL 142)

LEGATUM INSTITUTE | THE 2013 LEGATUM PROSPERITY INDEX™ COUNTRY FACTSHEET

DATA IN FOCUS:

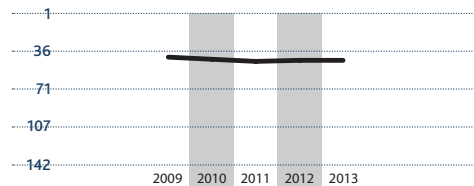
43

EUROPE RANKING

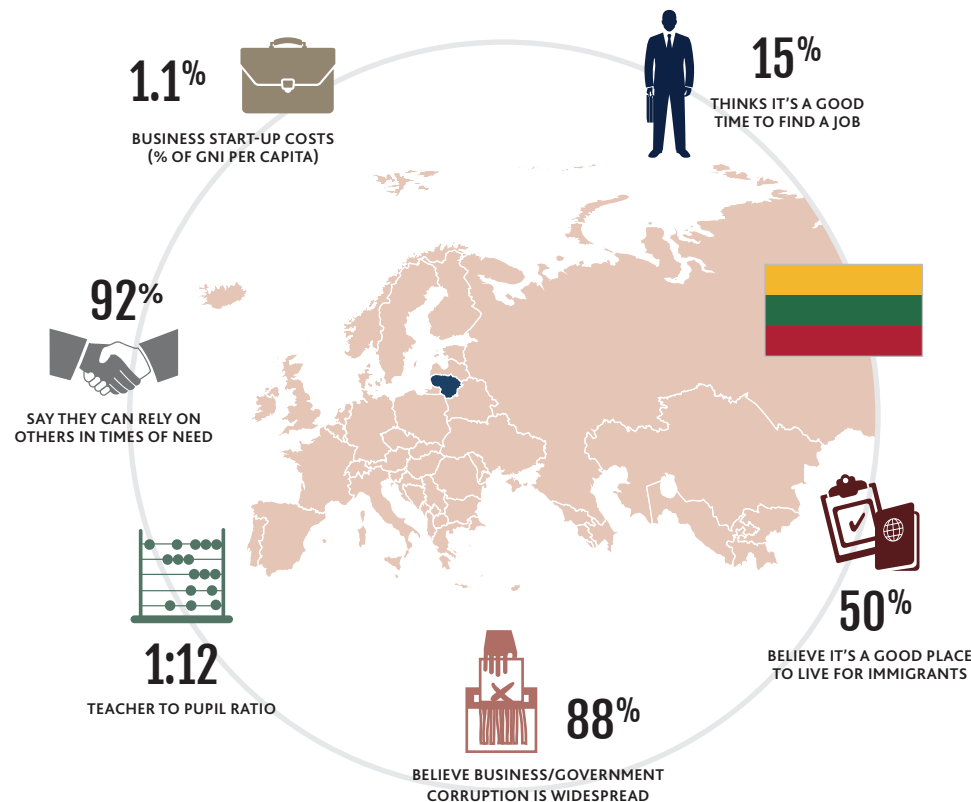
Norway	1
Switzerland	2
Sweden	4
Denmark	6
Finland	8
Netherlands	9
Luxembourg	10
Ireland	12
Iceland	13
Germany	14
Austria	15
United Kingdom	16
Belgium	17
France	20
Spain	23
Slovenia	24
Malta	25
Portugal	27
Czech Republic	29
Italy	32
Poland	34
Estonia	36
Cyprus	37
Slovakia	38
Hungary	41
Lithuania	43
Latvia	48
Bulgaria	49
Croatia	53
Greece	54
Romania	55
Belarus	58
Russia	61
Ukraine	64
Montenegro	71
Serbia	76
Macedonia	79
Azerbaijan	81
Albania	83
Georgia	84
Moldova	89
Armenia	95
Bosnia-Herzegovina	97

LITHUANIA

PERFORMANCE



- » Lithuania has kept its 43rd rank on overall Prosperity since 2009.
- » The Economy sub-index has moved down twenty-five places to 94th because of an increase in the unemployment rate and a decrease in the volatility-adjusted FDI as well as the satisfaction with living standards.
- » The Education sub-index has moved up by three places to 28th given a decrease in the Teacher to pupil ratio and an increase in the secondary education per worker.



SUB-INDICES

94	ECONOMY	Year	Data	Global Av.
	5 year growth rate	2011	3.5%	2.7%
	Confidence in financial institutions?* (% yes)	2012	31.6%	59.5%
	Satisfaction with living standards?* (% yes)	2012	30.3%	58.2%
40	ENTREPRENEURSHIP & OPPORTUNITY			
	R&D expenditure (% of GDP)	2011	0.9%	0.8%
	Mobile phones (per 100 ppl)	2012	151.8	103.9
	Will working hard get you ahead?* (% yes)	2012	43.8%	81.0%
45	GOVERNANCE			
	Confidence in the government?* (% yes)	2012	15.5%	51.5%
	Confidence in the judiciary?* (% yes)	2012	26.6%	52.1%
	Government effectiveness ¹	2011	0.68	0.04
28	EDUCATION			
	Gross secondary enrolment rate	2011	98.8%	79.3%
	Satisfaction with education quality?* (% yes)	2012	63.3%	66.3%
	Perception children are learning?* (% yes)	2012	47.0%	70.2%
43	HEALTH			
	Self-reported health problems?* (% yes)	2012	25.7%	23.9%
	Hospital beds* (per 1000 people)	2010	6.8	3.1
	Satisfaction with health?* (% yes)	2012	67.1%	78.2%
34	SAFETY & SECURITY			
	Human flight ²	2012	4.4	5.3
	Safe walking alone at night?* (% yes)	2012	48.9%	62.8%
	Property stolen in past 12 months?* (% yes)	2012	5.2%	16.5%
101	PERSONAL FREEDOM			
	Civil liberties ³	2012	7	4.7
	Tolerance for ethnic groups?* (% yes)	2012	56.7%	68.0%
	Satisfaction with freedom of choice?* (% yes)	2012	50.3%	71.7%
54	SOCIAL CAPITAL			
	Volunteered time in past month?* (% yes)	2012	12.2%	20.1%
	Donated to charity in past month?* (% yes)	2012	8.4%	28.3%
	Helped strangers in past month?* (% yes)	2012	37.8%	47.9%

NOTES: ¹Gov. effectiveness: values range from -1.66 to 2.25, higher values indicate higher effectiveness. ²Human flight: values range from 1 to 10, higher values indicate higher levels of human flight. ³Civil liberties: values range from 1 to 7, lower values indicate lack of civil liberties. *Survey data are taken from Gallup World Poll.